

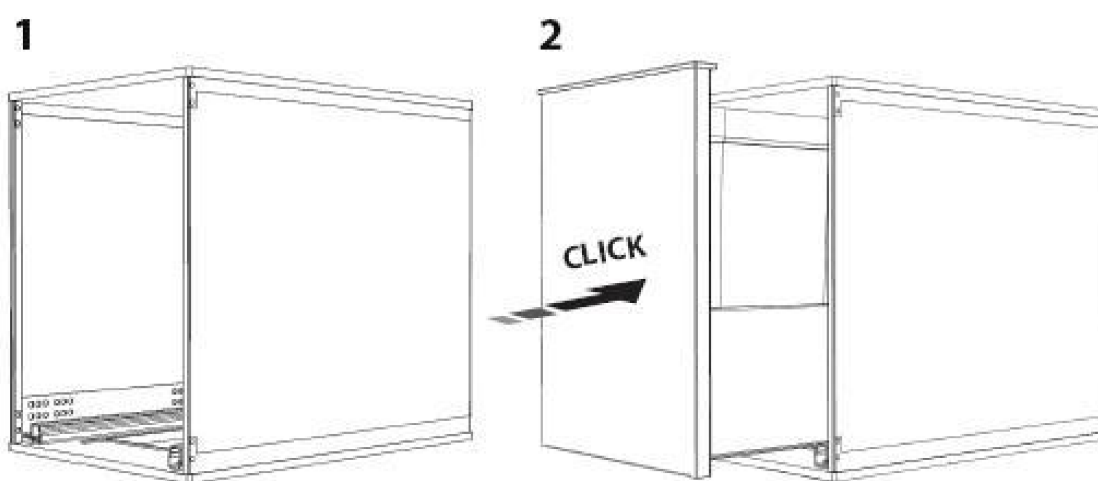
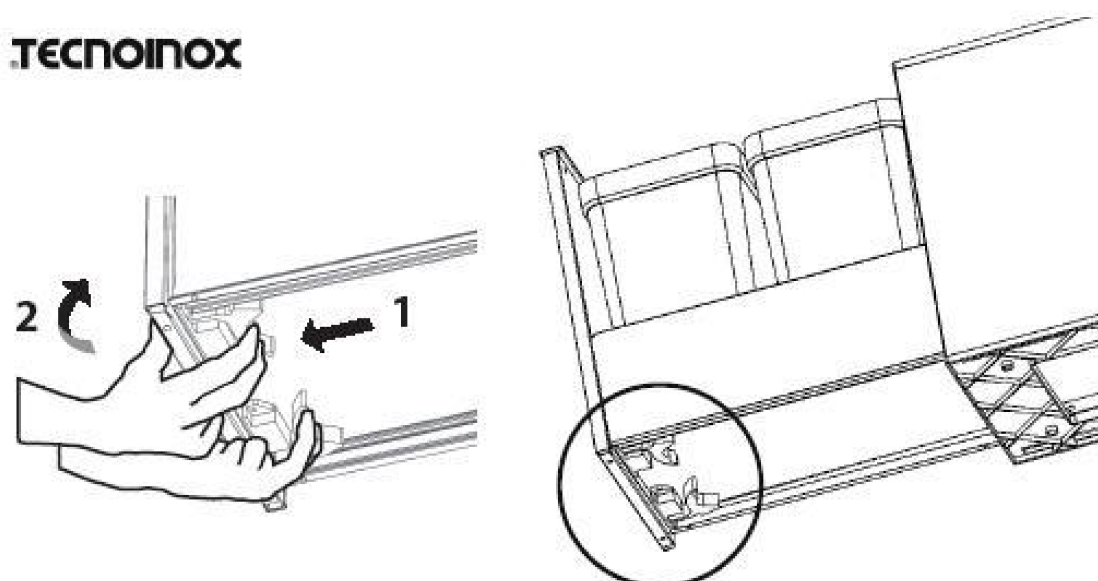


I N S T R U C C I O N E S D E M O N T A J E

S E R I E B O X

www.cucineoggi.com

TECNOINOX



BOX - ASSEMBLY INSTRUCTION

Remove the drawer and unhook it from the guides by pressing the appropriate releases as indicated in the first picture.

Put the body of the dustbin inside the cabinet in the desired position and fix it with self-drilling screws to the worktop.

Insert the drawer placing it on the guides and push it until you hear "click".